



G.S PARKHE AWARD



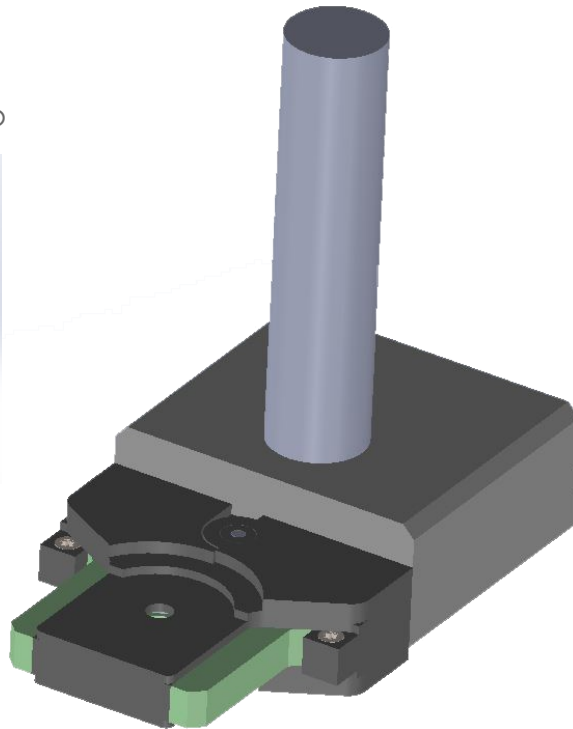
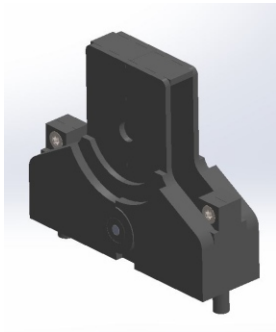
CII AWARD



MADE IN INDIA

Orbital Welding Closed Arc Weld Head CA-12 (M1)

Removable Clamp

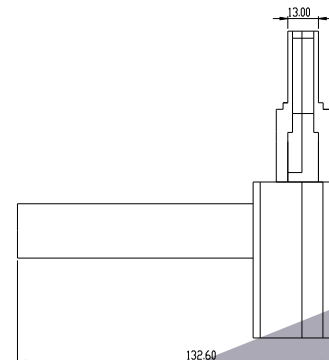
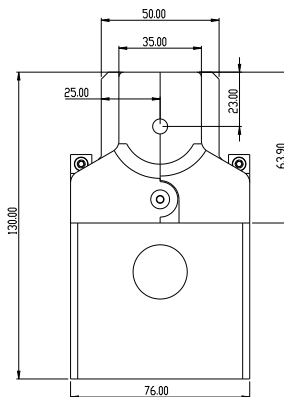


Technical Specifications

| Description | Unit | CA-12(M1) |
|------------------------|-----------|-----------|
| Diameter of Work Piece | mm | 3 to 12.7 |
| Speed Range | Rot / min | 1.6 To 16 |
| Power | Watts | 25 |
| Weight | Kg | 1.8 |
| Cable Length | Mtr | 8 |

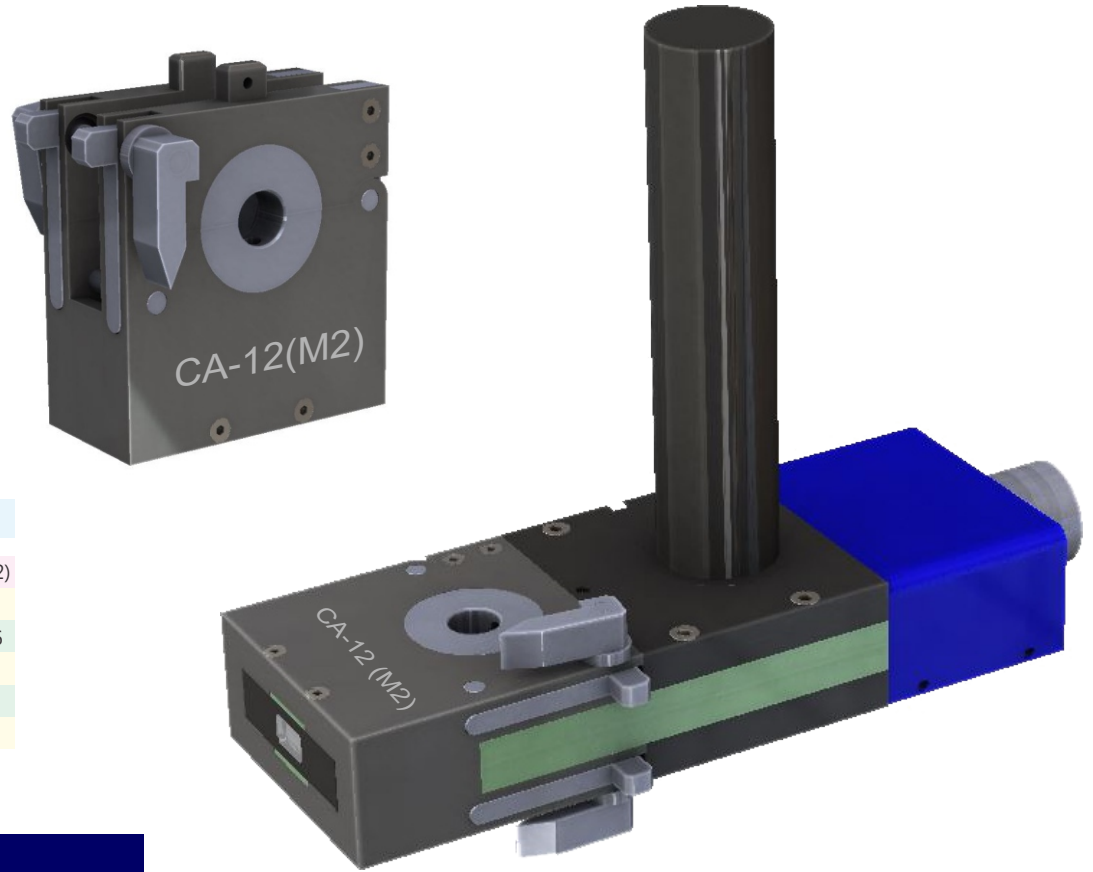
Features

- ◆ Ideal For Tube And Micro Fitting
- ◆ Removable Clamping Systems
- ◆ Compact Design to Permit Use in Situations Where Access is Limited
- ◆ Shielded-Gas Chamber to Prevent OD Discoloration
- ◆ Quick Change Collets Systems
- ◆ Welding on Actual Position
- ◆ Simple & Rugged Design
- ◆ DC Motor with Encoder



The
Complete
Orbital Welding Solution

Orbital Welding Closed Arc Weld Head CA-12 (M2)

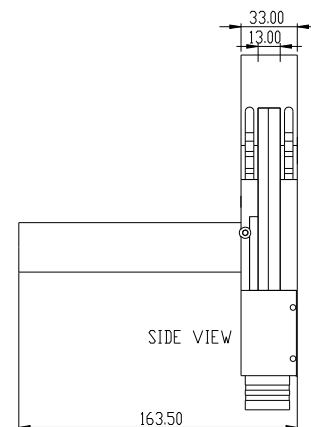
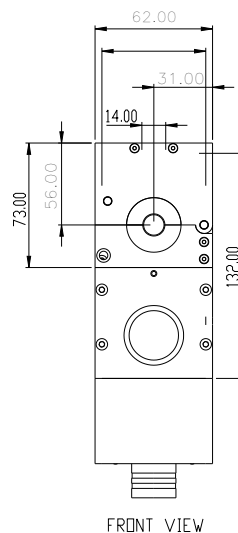


Technical Specifications

| Description | Unit | CA-12(M2) |
|------------------------|-----------|-----------|
| Diameter of Work Piece | mm | 3 To 14 |
| Speed Range | Rot / min | 1.6 To 16 |
| Power | Watts | 25 |
| Weight | Kg | 2 |
| Cable Length | Mtr | 8 |

Features

- ◆ Ideal For Tube And Micro Fitting
- ◆ Removable Clamping Systems
- ◆ Compact Design to Permit Use in Situations Where Access is Limited
- ◆ Shielded-Gas Chamber to Prevent OD Discoloration
- ◆ Quick Change Collets Systems
- ◆ Welding on Actual Position
- ◆ Simple & Rugged Design



Due to continues development, product specifications are subject to change.

